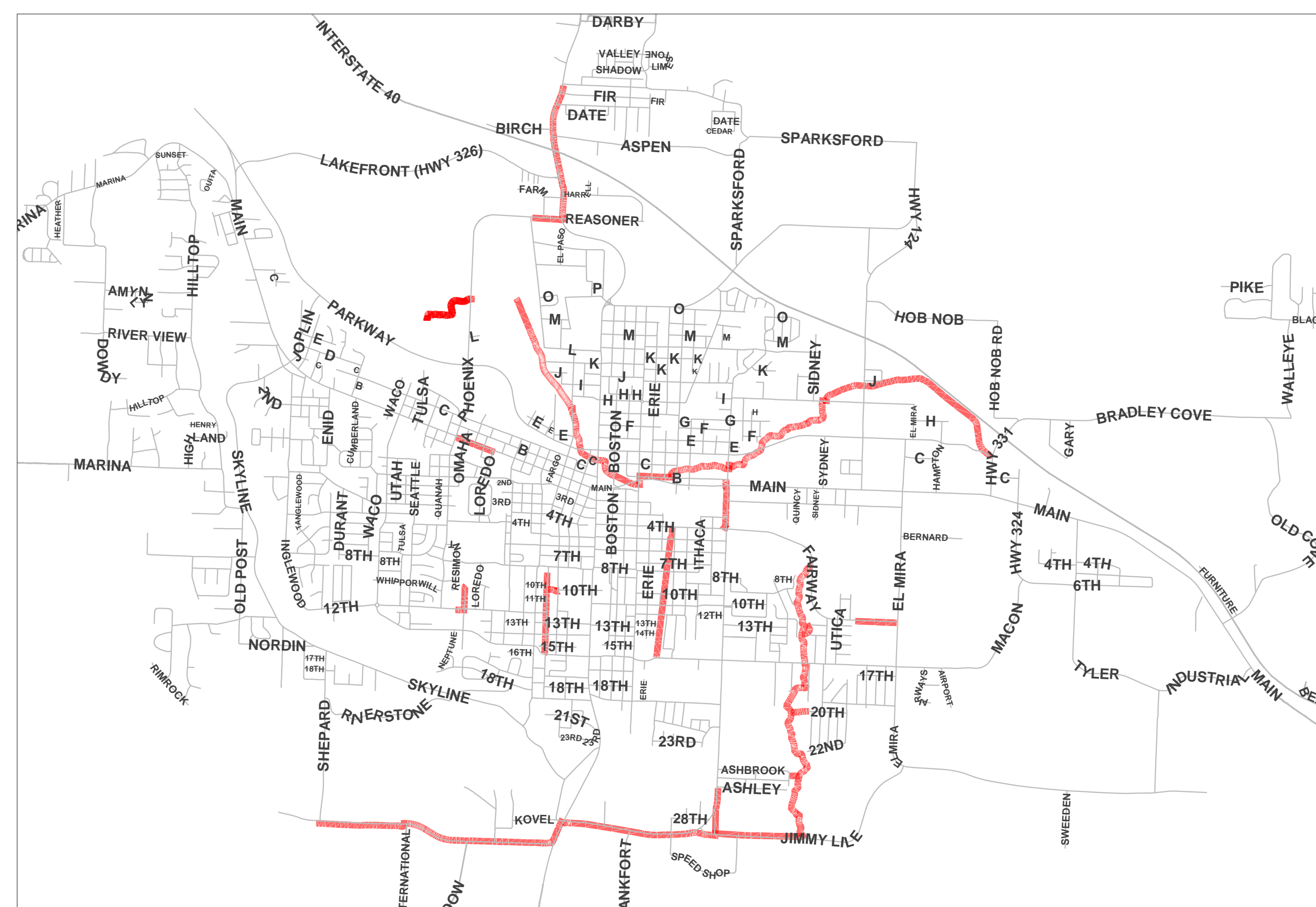


RUSSELLVILLE TRAILS PRELIMINARY TRAIL LAYOUT RUSSELLVILLE, AR RAISE GRANT APPLICATION - APPENDIX 13

VICINITY MAP



INDEX TO DRAWINGS

- 1.0 COVER SHEET
- 1.1 SHEET KEY MAP
- 1.2 SHEET KEY MAP
- 1.3 PROJECT OVERVIEW MAP
- 1.4 PERSISTENT POVERTY
- 1.5 HISTORICALLY DISADVANTAGED
- 2-5 INTERSTATE PEDESTRIAN OVERPASS
- 6-17 PRAIRIE CREEK TRAIL
- 18-24 WHIG CREEK (CYCLONE TRAIL)
- 25-35 LOCK AND DAM TRAIL
- 36 AQUATIC CENTER TRAIL
- 37 WEST MAIN TRAIL
- 38 NORTH KNOXVILLE TRAIL
- 39 SCHOOL HOUSE CONNECTION
- 40-41 SOUTH EL PASO TRAIL
- 42-44 D & R RAILROAD TRAIL
- 45 ELMIRA CONNECTION TRAIL

TRAIL LEGEND (PLAN SHEETS)

- CONCRETE TRAIL
- ASPHALT TRAIL
- BRIDGES AND TUNNELS
- EXISTING TRAIL

DATE: FEBRUARY 24, 2023
 JOB#: 23-007

RUSSELLVILLE PUBLIC WORKS
 220 N. KNOXVILLE AVE., RUSSELLVILLE, ARKANSAS
 PH 479.968.2406

| Revisions: | | |
|------------|------|-------------|
| No. | Date | Description |
| | | |
| | | |
| | | |
| | | |
| | | |

Approval Stamp: _____

Scale: _____

Sheet Name: _____

COVER PAGE

| | |
|-------------------|-----------------------|
| Drawn By: SS | Job Number: 23-007 |
| Design By: GEN | |
| Date: 02-24-23 | Sheet Number: 1.0 |



Revisions:

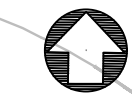
| No. | Date | Description |
|-----|------|-------------|
| | | |
| | | |
| | | |
| | | |
| | | |

Approval Stamp: _____

Scale: _____

Sheet Name: **Sheet Key Map**

| | |
|----------------|--------------------|
| Drawn By: SS | Job Number: 23-007 |
| Design By: GEN | |
| Date: 02-24-23 | Sheet Number: 1.1 |





Revisions:

| No. | Date | Description |
|-----|------|-------------|
| | | |
| | | |
| | | |
| | | |
| | | |

Approval Stamp: _____

Scale: _____

Sheet Name: **Sheet Key Map**

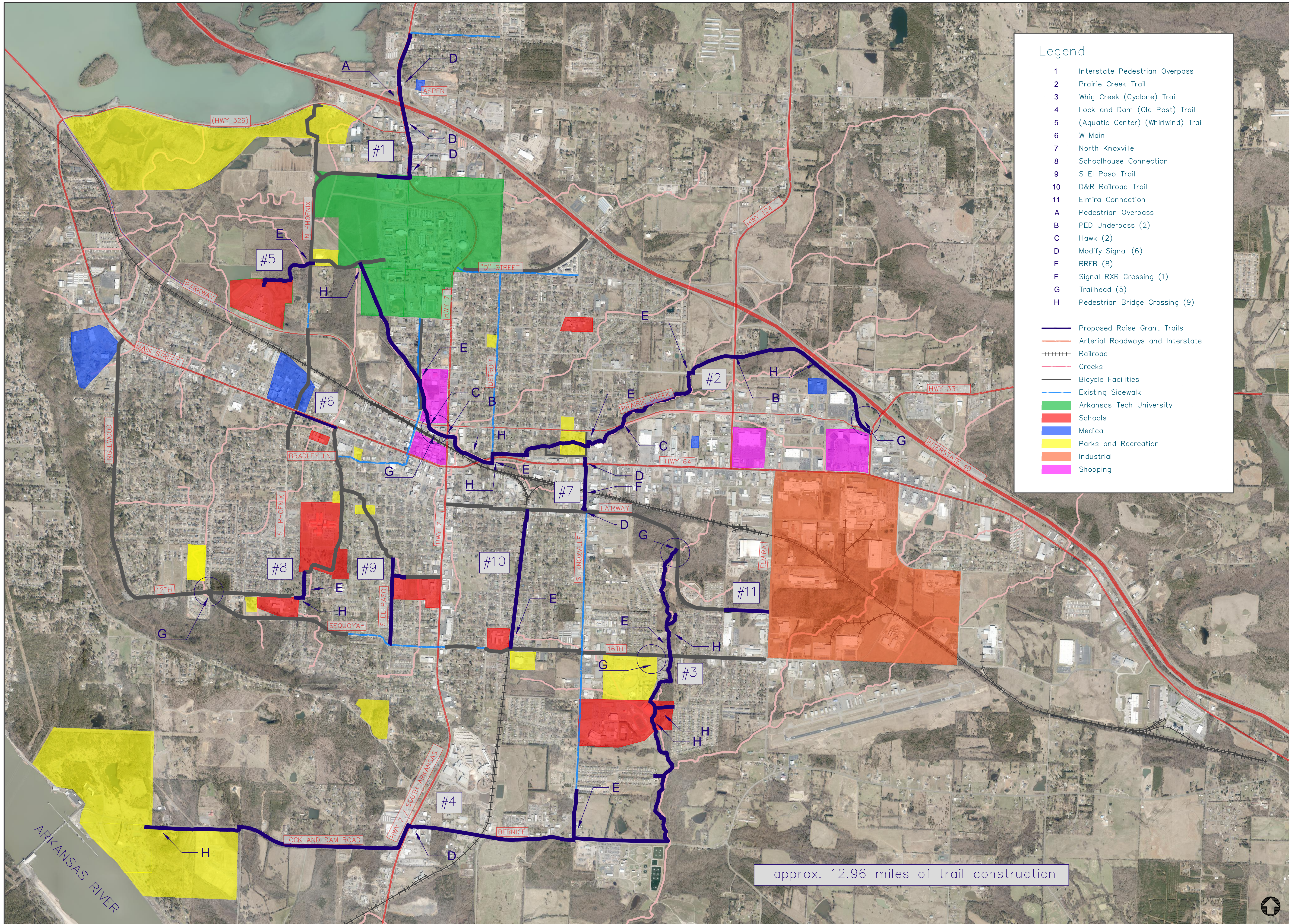
| | |
|-------------------|-----------------------|
| Drawn By: SS | Job Number: 23-007 |
| Design By: GEN | |
| Date: 02-24-23 | Sheet Number: 1.2 |



Legend

- 1 Interstate Pedestrian Overpass
- 2 Prairie Creek Trail
- 3 Whig Creek (Cyclone) Trail
- 4 Lock and Dam (Old Post) Trail
- 5 (Aquatic Center) (Whirlwind) Trail
- 6 W Main
- 7 North Knoxville
- 8 Schoolhouse Connection
- 9 S El Paso Trail
- 10 D&R Railroad Trail
- 11 Elmira Connection
- A Pedestrian Overpass
- B PED Underpass (2)
- C Hawk (2)
- D Modify Signal (6)
- E RRFB (8)
- F Signal RXR Crossing (1)
- G Trailhead (5)
- H Pedestrian Bridge Crossing (9)

- Proposed Raise Grant Trails
- Arterial Roadways and Interstate
- Railroad
- Creeks
- Bicycle Facilities
- Existing Sidewalk
- Arkansas Tech University
- Schools
- Medical
- Parks and Recreation
- Industrial
- Shopping



approx. 12.96 miles of trail construction

Revisions:

| No. | Date | Description |
|-----|------|-------------|
| | | |
| | | |
| | | |
| | | |
| | | |

Approval Stamp: _____

Scale: _____

Sheet Name: _____

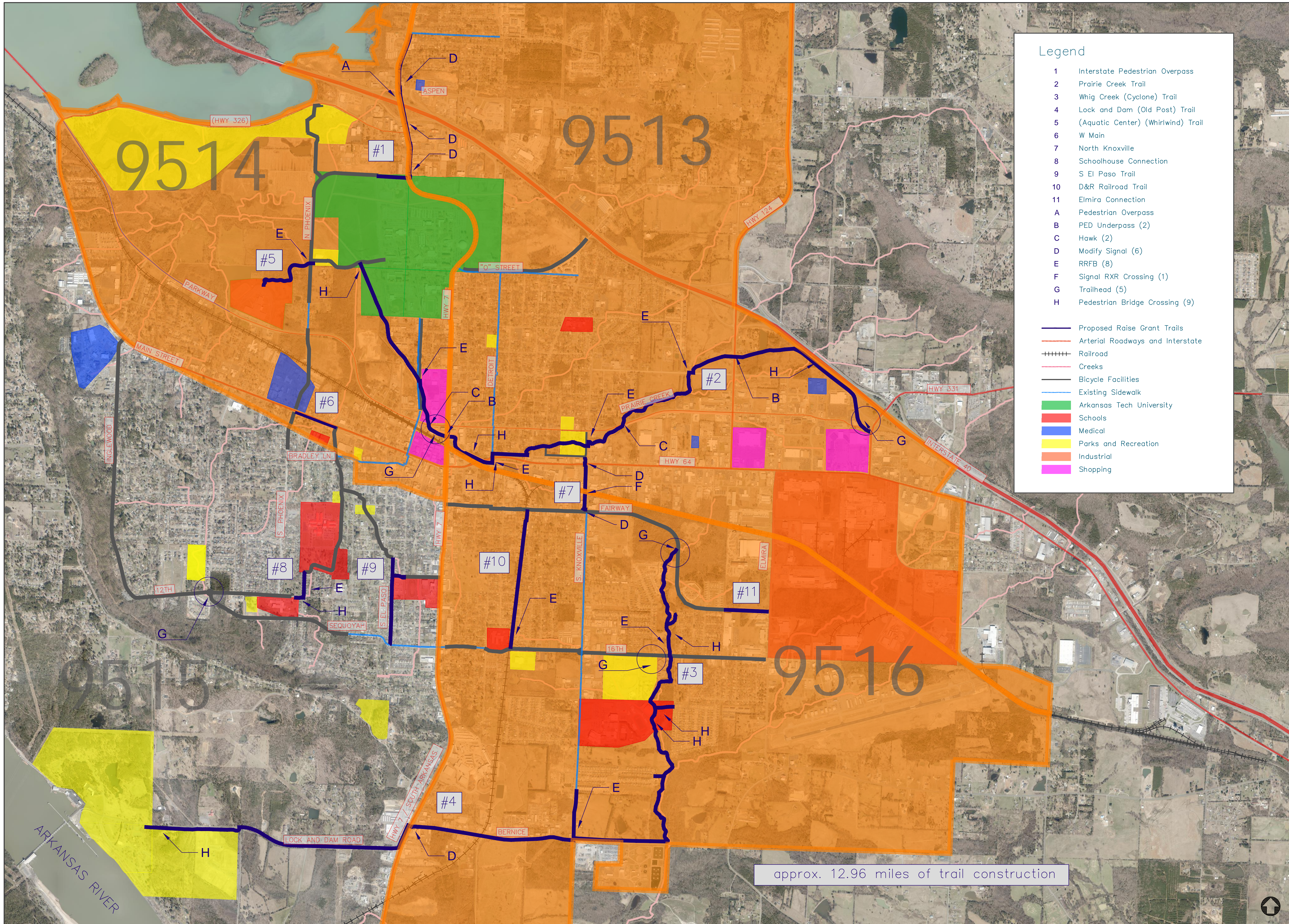
| | |
|-------------------|-----------------------|
| Drawn By: SS | Job Number: 23-007 |
| Design By: GEN | |
| Date: 02-24-23 | Sheet Number: 1.3 |



Legend

- 1 Interstate Pedestrian Overpass
- 2 Prairie Creek Trail
- 3 Whig Creek (Cyclone) Trail
- 4 Lock and Dam (Old Post) Trail
- 5 (Aquatic Center) (Whirlwind) Trail
- 6 W Main
- 7 North Knoxville
- 8 Schoolhouse Connection
- 9 S El Paso Trail
- 10 D&R Railroad Trail
- 11 Elmira Connection
- A Pedestrian Overpass
- B PED Underpass (2)
- C Hawk (2)
- D Modify Signal (6)
- E RRFB (8)
- F Signal RXR Crossing (1)
- G Trailhead (5)
- H Pedestrian Bridge Crossing (9)

- Proposed Raise Grant Trails
- Arterial Roadways and Interstate
- Railroad
- Creeks
- Bicycle Facilities
- Existing Sidewalk
- Arkansas Tech University
- Schools
- Medical
- Parks and Recreation
- Industrial
- Shopping



Revisions:

| No. | Date | Description |
|-----|------|-------------|
| | | |
| | | |
| | | |
| | | |
| | | |

Approval Stamp: _____

Scale: _____

Sheet Name: _____

| | |
|-------------------|-----------------------|
| Drawn By: SS | Job Number: 23-007 |
| Design By: GEN | |
| Date: 02-24-23 | Sheet Number: 1.4 |

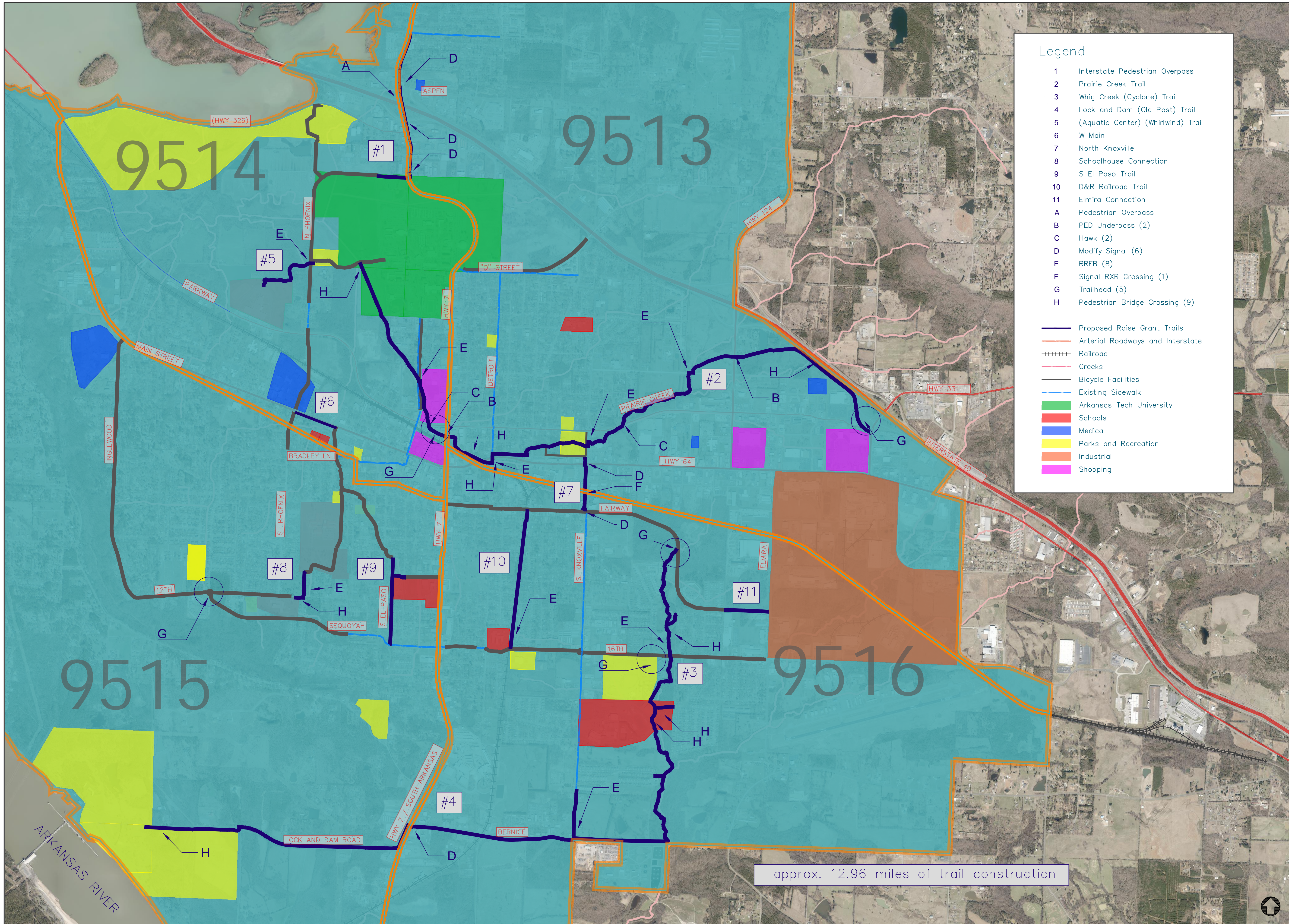


HISTORICALLY DISADVANTAGED

Legend

- 1 Interstate Pedestrian Overpass
- 2 Prairie Creek Trail
- 3 Whig Creek (Cyclone) Trail
- 4 Lock and Dam (Old Post) Trail
- 5 (Aquatic Center) (Whirlwind) Trail
- 6 W Main
- 7 North Knoxville
- 8 Schoolhouse Connection
- 9 S El Paso Trail
- 10 D&R Railroad Trail
- 11 Elmira Connection
- A Pedestrian Overpass
- B PED Underpass (2)
- C Hawk (2)
- D Modify Signal (6)
- E RRFB (8)
- F Signal RXR Crossing (1)
- G Trailhead (5)
- H Pedestrian Bridge Crossing (9)

- Proposed Raise Grant Trails
- Arterial Roadways and Interstate
- Railroad
- Creeks
- Bicycle Facilities
- Existing Sidewalk
- Arkansas Tech University
- Schools
- Medical
- Parks and Recreation
- Industrial
- Shopping



Revisions:

| No. | Date | Description |
|-----|------|-------------|
| | | |
| | | |
| | | |
| | | |
| | | |

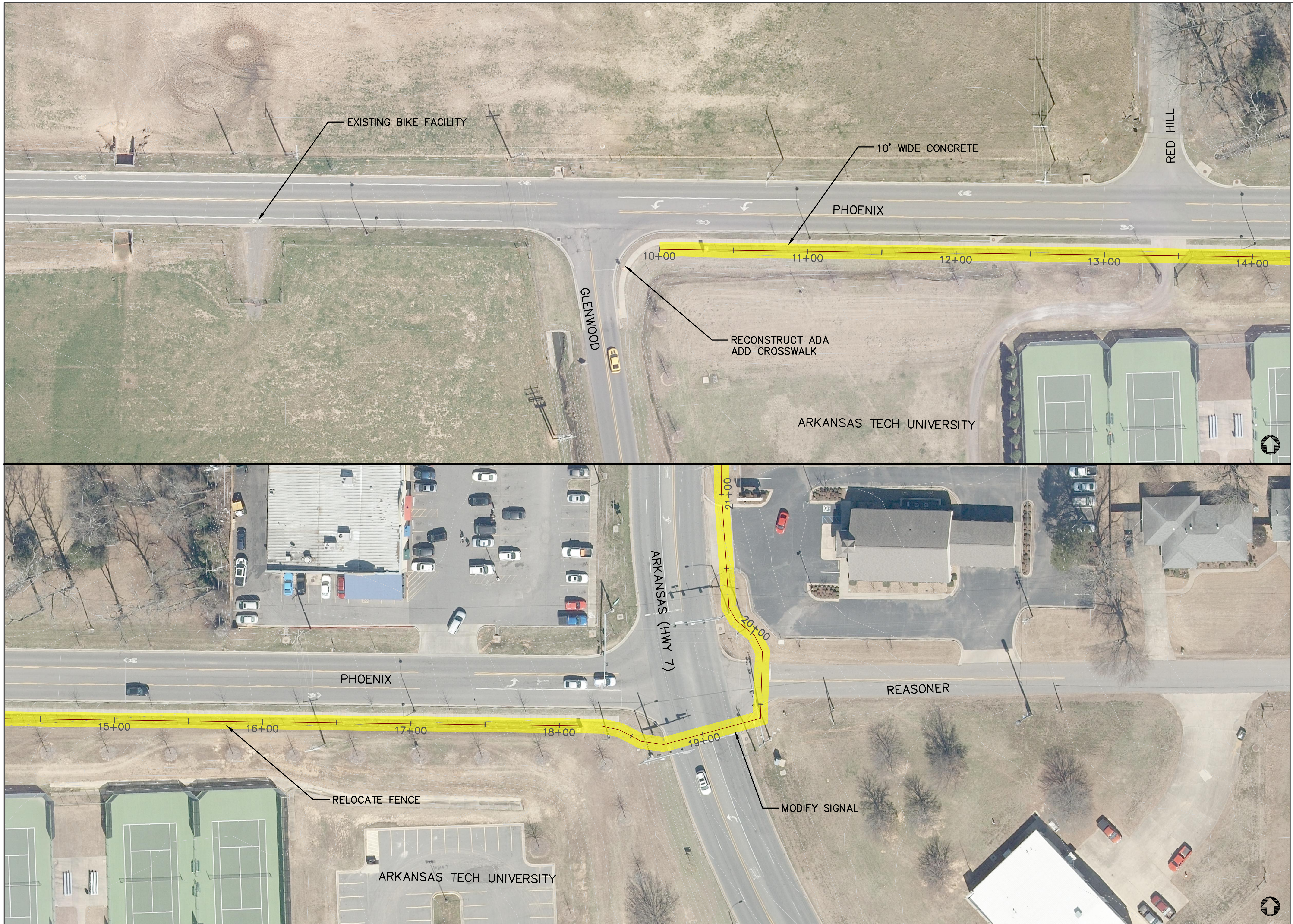
Approval Stamp: _____

Scale: _____

Sheet Name: _____

| | |
|-------------------|-----------------------|
| Drawn By: SS | Job Number: 23-007 |
| Design By: GEN | |
| Date: 02-24-23 | Sheet Number: 1.5 |



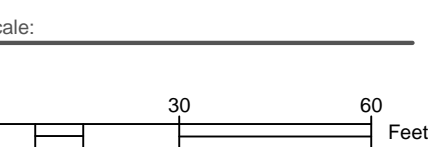


#1 INTERSTATE PEDESTRIAN OVERPASS

Revisions:

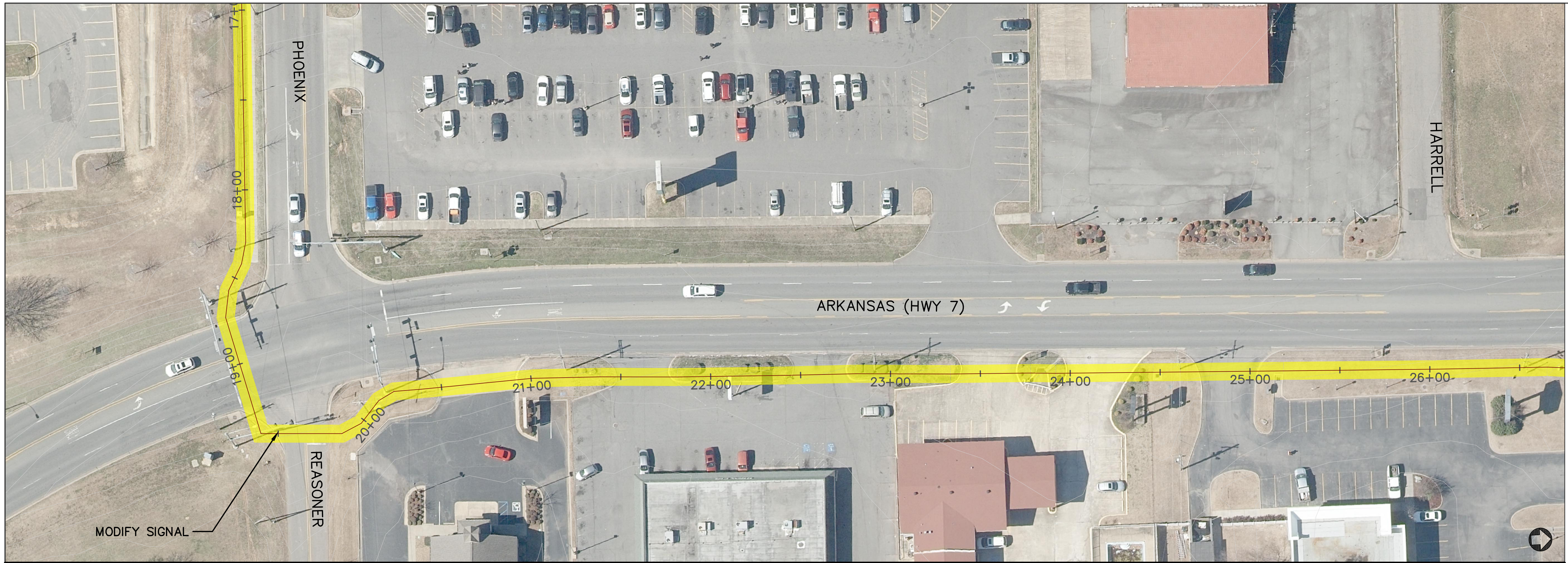
| No. | Date | Description |
|-----|------|-------------|
| | | |
| | | |
| | | |
| | | |
| | | |

Approval Stamp: _____



| | |
|-------------------|-----------------------|
| Drawn By: SS | Job Number: 23-007 |
| Design By: GEN | Sheet Number: 2 |
| Date: 02-24-23 | |

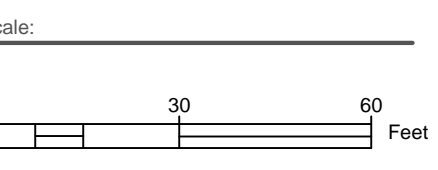
#1 INTERSTATE PEDESTRIAN OVERPASS



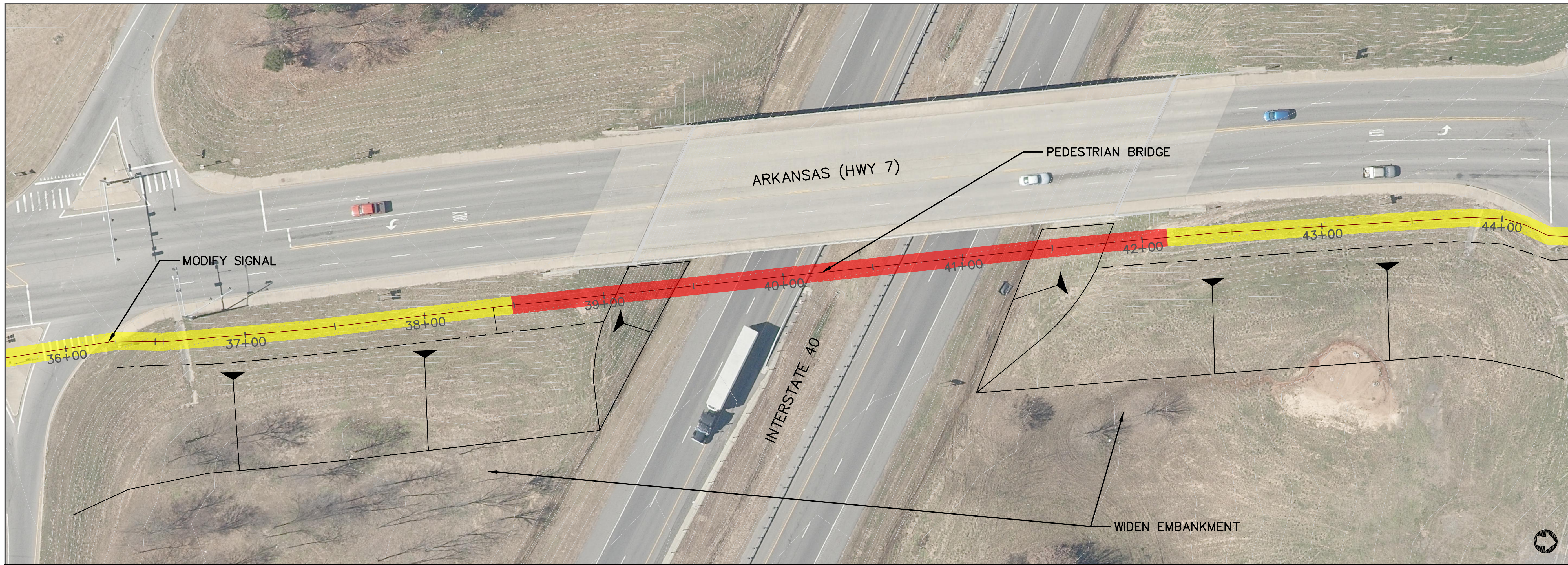
Revisions:

| No. | Date | Description |
|-----|------|-------------|
| | | |
| | | |
| | | |
| | | |

Approval Stamp: _____



| | |
|-------------------|-----------------------|
| Drawn By: SS | Job Number: 23-007 |
| Design By: GEN | |
| Date: 02-24-23 | Sheet Number: 3 |

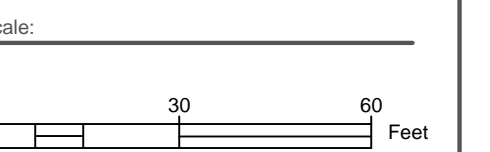


#1 INTERSTATE PEDESTRIAN OVERPASS

Revisions:

| No. | Date | Description |
|-----|------|-------------|
| | | |
| | | |
| | | |
| | | |

Approval Stamp: _____



| | |
|-------------------|-----------------------|
| Drawn By: SS | Job Number: 23-007 |
| Design By: GEN | |
| Date: 02-24-23 | Sheet Number: 4 |

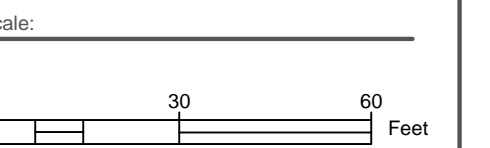


#1 INTERSTATE PEDESTRIAN OVERPASS

Revisions:

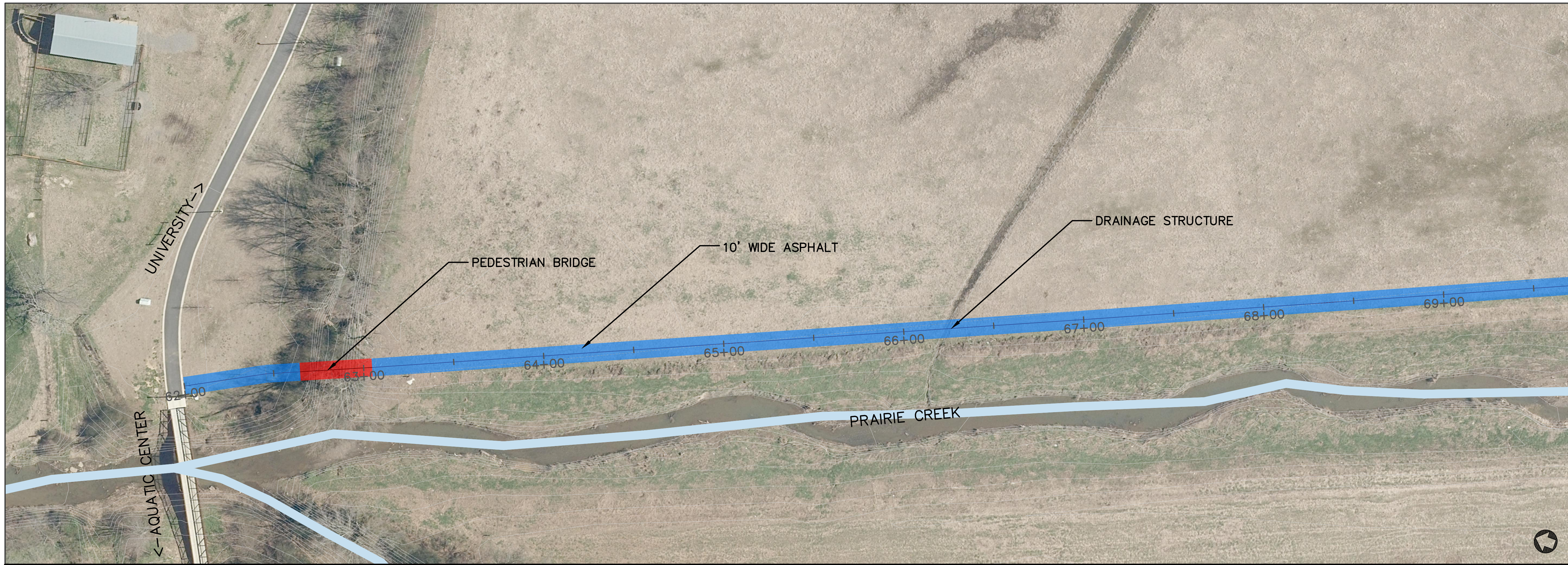
| No. | Date | Description |
|-----|------|-------------|
| | | |
| | | |
| | | |
| | | |

Approval Stamp: _____



| | |
|-------------------|-----------------------|
| Drawn By: SS | Job Number: 23-007 |
| Design By: GEN | |
| Date: 02-24-23 | Sheet Number: 5 |

Project Name: _____

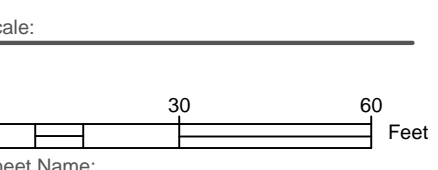


#2. Prairie Creek Trail

Revisions:

| No. | Date | Description |
|-----|------|-------------|
| | | |
| | | |
| | | |
| | | |

Approval Stamp: _____



| | |
|-------------------|-----------------------|
| Drawn By: SS | Job Number: 23-007 |
| Design By: GEN | |
| Date: 02-24-23 | Sheet Number: 6 |

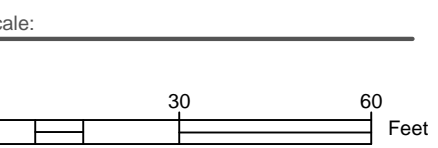


#2. Prairie Creek Trail

Revisions:

| No. | Date | Description |
|-----|------|-------------|
| | | |
| | | |
| | | |
| | | |

Approval Stamp: _____



| | |
|-------------------|-----------------------|
| Drawn By: SS | Job Number: 23-007 |
| Design By: GEN | |
| Date: 02-24-23 | Sheet Number: 7 |

Project Name: _____

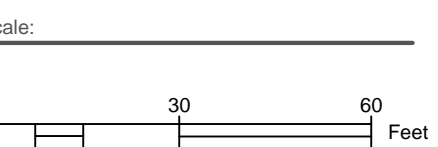
#2. Prairie Creek Trail



Revisions:

| No. | Date | Description |
|-----|------|-------------|
| | | |
| | | |
| | | |
| | | |

Approval Stamp: _____



| | |
|-------------------|-----------------------|
| Drawn By: SS | Job Number: 23-007 |
| Design By: GEN | Sheet Number: 8 |
| Date: 02-24-23 | |

Project Name:

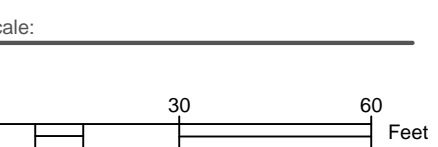
#2. Prairie Creek Trail



Revisions:

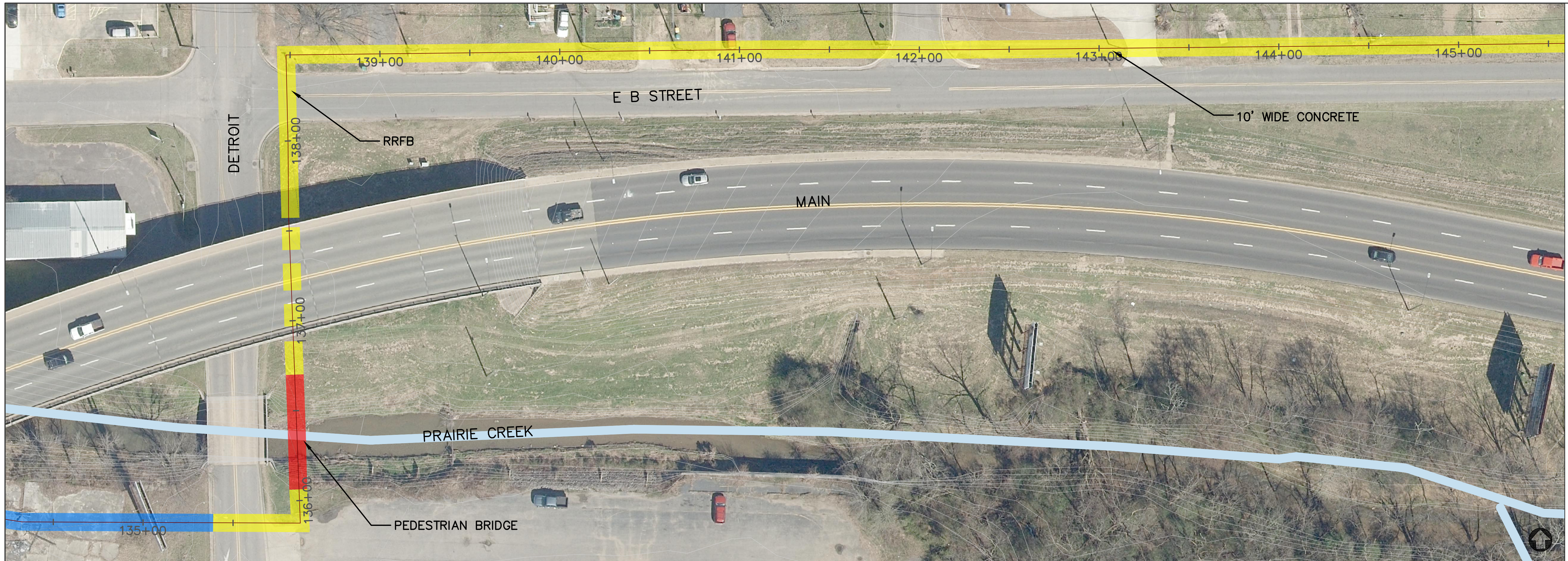
| No. | Date | Description |
|-----|------|-------------|
| | | |
| | | |
| | | |
| | | |

Approval Stamp:



| | |
|-------------------|-----------------------|
| Drawn By: SS | Job Number: 23-007 |
| Design By: GEN | Sheet Number: 9 |
| Date: 02-24-23 | |

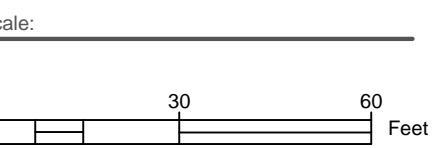
#2. Prairie Creek Trail



Revisions:

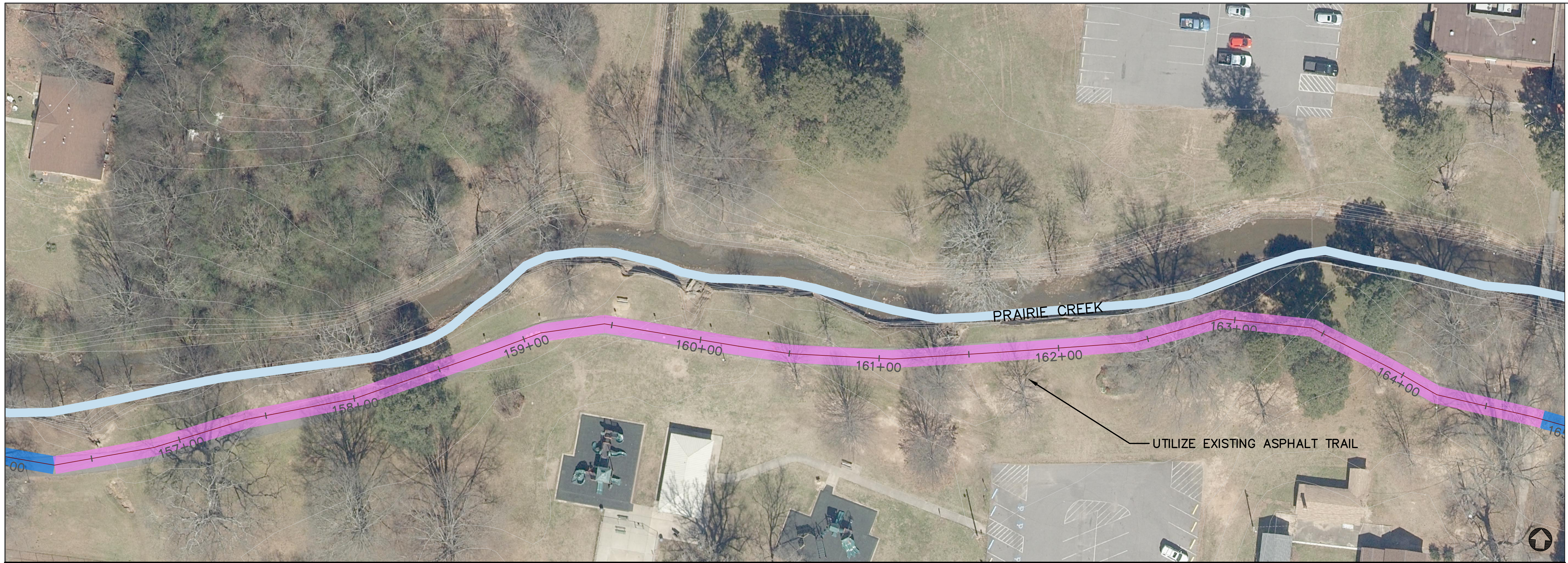
| No. | Date | Description |
|-----|------|-------------|
| | | |
| | | |
| | | |
| | | |

Approval Stamp: _____



| | |
|-------------------|-----------------------|
| Drawn By: SS | Job Number: 23-007 |
| Design By: GEN | Sheet Number: 10 |
| Date: 02-24-23 | |

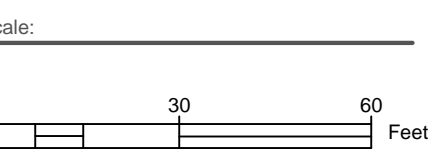
#2. Prairie Creek Trail



Revisions:

| No. | Date | Description |
|-----|------|-------------|
| | | |
| | | |
| | | |
| | | |
| | | |

Approval Stamp: _____



| | |
|-------------------|-----------------------|
| Drawn By: SS | Job Number: 23-007 |
| Design By: GEN | |
| Date: 02-24-23 | Sheet Number: 11 |

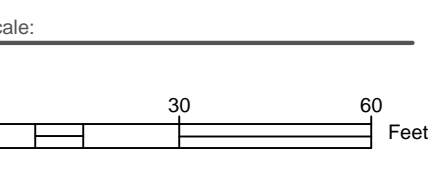
#2. Prairie Creek Trail



Revisions:

| No. | Date | Description |
|-----|------|-------------|
| | | |
| | | |
| | | |
| | | |

Approval Stamp: _____



| | |
|-------------------|-----------------------|
| Drawn By: SS | Job Number: 23-007 |
| Design By: GEN | |
| Date: 02-24-23 | Sheet Number: 12 |

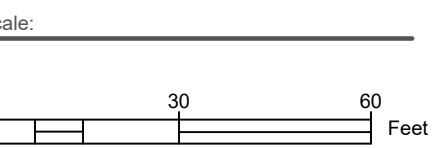
#2. Prairie Creek Trail



Revisions:

| No. | Date | Description |
|-----|------|-------------|
| | | |
| | | |
| | | |
| | | |

Approval Stamp: _____



| | |
|-------------------|-----------------------|
| Drawn By: SS | Job Number: 23-007 |
| Design By: GEN | |
| Date: 02-24-23 | Sheet Number: 13 |

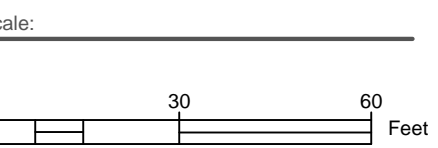
#2. Prairie Creek Trail



Revisions:

| No. | Date | Description |
|-----|------|-------------|
| | | |
| | | |
| | | |
| | | |

Approval Stamp: _____



| | |
|-------------------|-----------------------|
| Drawn By: SS | Job Number: 23-007 |
| Design By: GEN | |
| Date: 02-24-23 | Sheet Number: 14 |

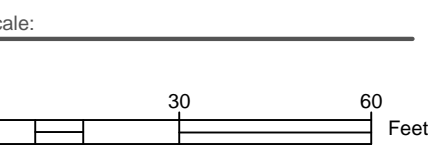
#2. Prairie Creek Trail



Revisions:

| No. | Date | Description |
|-----|------|-------------|
| | | |
| | | |
| | | |
| | | |

Approval Stamp: _____



| | |
|-------------------|-----------------------|
| Drawn By: SS | Job Number: 23-007 |
| Design By: GEN | |
| Date: 02-24-23 | Sheet Number: 15 |

INTERSTATE 40

250+00 251+00 252+00 253+00 254+00 255+00 256+00 257+00 258+00

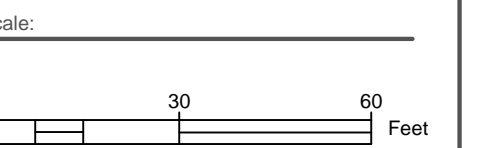
259+00 260+00 261+00 262+00 263+00 264+00 265+00 266+00 267+00

#2. Prairie Creek Trail

Revisions:

| No. | Date | Description |
|-----|------|-------------|
| | | |
| | | |
| | | |
| | | |

Approval Stamp: _____



| | |
|-------------------|-----------------------|
| Drawn By: SS | Job Number: 23-007 |
| Design By: GEN | |
| Date: 02-24-23 | Sheet Number: 16 |



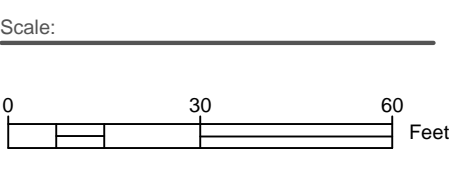
Project Name: _____

#2. Prairie Creek Trail

Revisions:

| No. | Date | Description |
|-----|------|-------------|
| | | |
| | | |
| | | |
| | | |
| | | |

Approval Stamp: _____



| | |
|-------------------|-----------------------|
| Drawn By: SS | Job Number: 23-007 |
| Design By: GEN | |
| Date: 02-24-23 | Sheet Number: 17 |

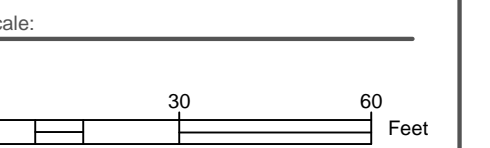


#3 Whig Creek Trail

Revisions:

| No. | Date | Description |
|-----|------|-------------|
| | | |
| | | |
| | | |
| | | |

Approval Stamp: _____



| | |
|-------------------|-----------------------|
| Drawn By: SS | Job Number: 23-007 |
| Design By: GEN | |
| Date: 02-24-23 | Sheet Number: 18 |

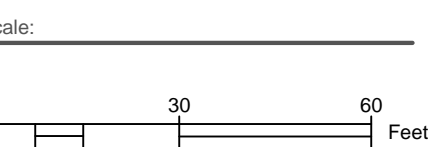
#3 Whig Creek Trail



Revisions:

| No. | Date | Description |
|-----|------|-------------|
| | | |
| | | |
| | | |
| | | |

Approval Stamp: _____



| | |
|-------------------|-----------------------|
| Drawn By: SS | Job Number: 23-007 |
| Design By: GEN | Sheet Number: 19 |
| Date: 02-24-23 | |

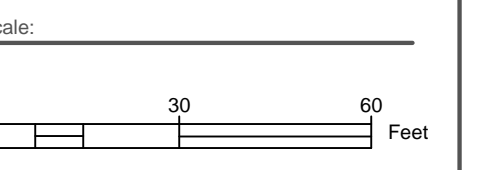


#3 Whig Creek Trail

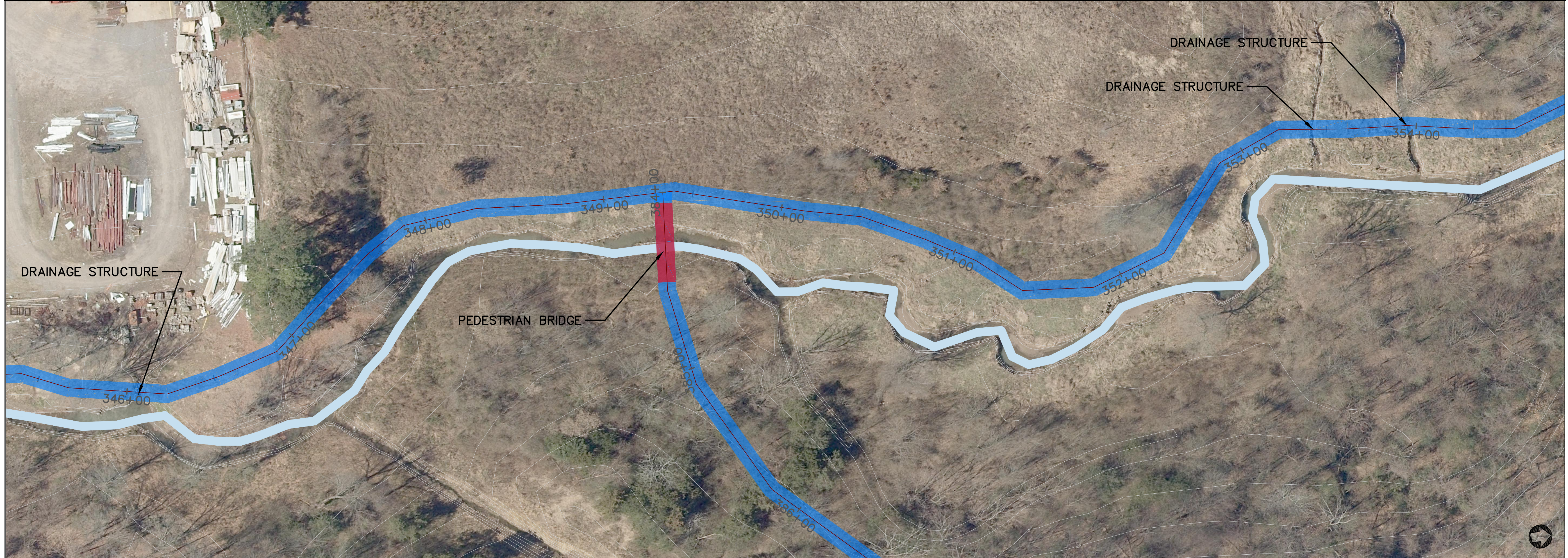
Revisions:

| No. | Date | Description |
|-----|------|-------------|
| | | |
| | | |
| | | |
| | | |

Approval Stamp: _____



| | |
|-------------------|-----------------------|
| Drawn By: SS | Job Number: 23-007 |
| Design By: GEN | |
| Date: 02-24-23 | Sheet Number: 20 |

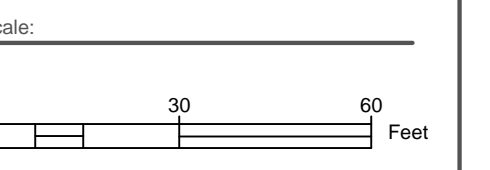


#3 Whig Creek Trail

Revisions:

| No. | Date | Description |
|-----|------|-------------|
| | | |
| | | |
| | | |
| | | |

Approval Stamp: _____



| | |
|-------------------|-----------------------|
| Drawn By: SS | Job Number: 23-007 |
| Design By: GEN | Sheet Number: 21 |
| Date: 02-24-23 | |

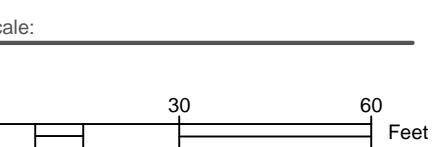
#3 Whig Creek Trail



Revisions:

| No. | Date | Description |
|-----|------|-------------|
| | | |
| | | |
| | | |
| | | |

Approval Stamp: _____



| | |
|-------------------|-----------------------|
| Drawn By: SS | Job Number: 23-007 |
| Design By: GEN | |
| Date: 02-24-23 | Sheet Number: 22 |

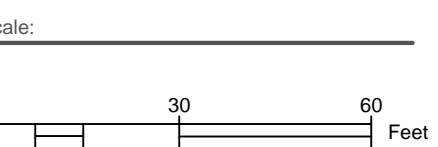
#3 Whig Creek Trail



Revisions:

| No. | Date | Description |
|-----|------|-------------|
| | | |
| | | |
| | | |
| | | |

Approval Stamp: _____



| | |
|-------------------|-----------------------|
| Drawn By: SS | Job Number: 23-007 |
| Design By: GEN | Sheet Number: 23 |
| Date: 02-24-23 | |

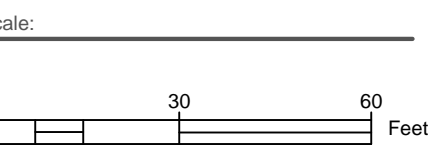


#3 Whig Creek Trail

Revisions:

| No. | Date | Description |
|-----|------|-------------|
| | | |
| | | |
| | | |
| | | |
| | | |

Approval Stamp: _____



| | |
|-------------------|-----------------------|
| Drawn By: SS | Job Number: 23-007 |
| Design By: GEN | |
| Date: 02-24-23 | Sheet Number: 24 |

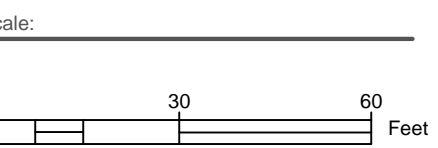
#4 LOCK AND DAM TRAIL



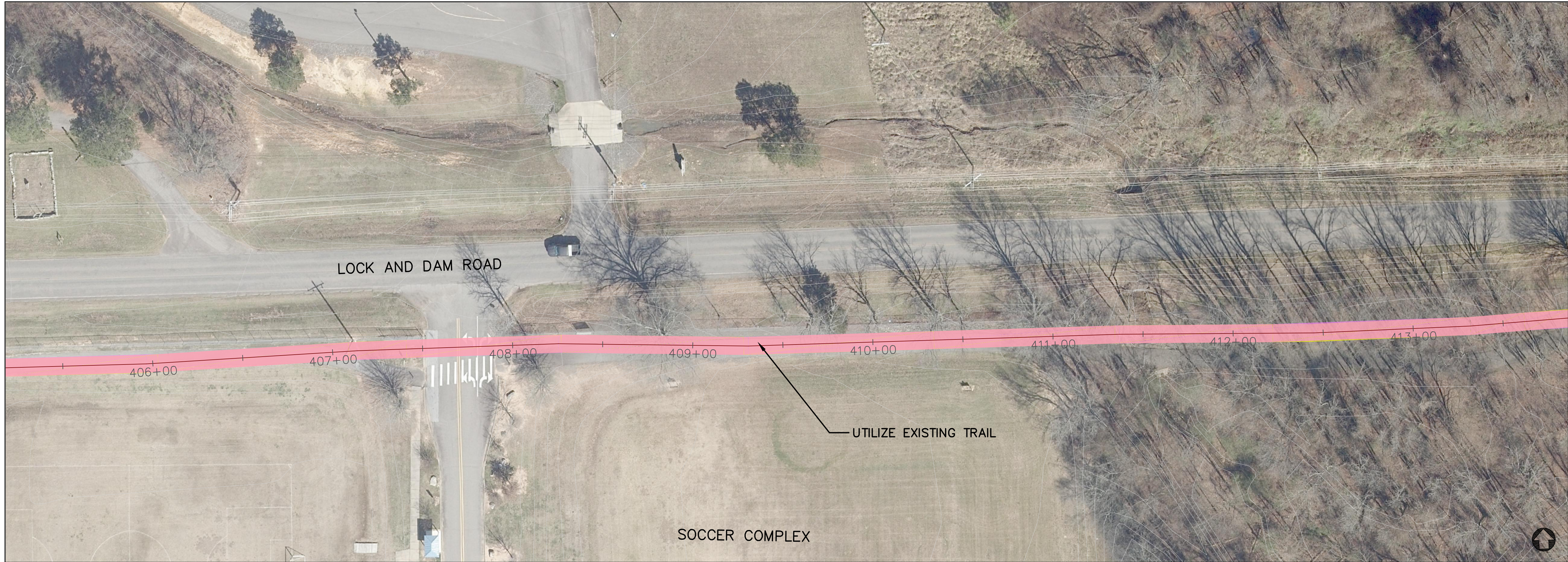
Revisions:

| No. | Date | Description |
|-----|------|-------------|
| | | |
| | | |
| | | |
| | | |

Approval Stamp: _____



| | |
|-------------------|-----------------------|
| Drawn By: SS | Job Number: 23-007 |
| Design By: GEN | |
| Date: 02-24-23 | Sheet Number: 25 |

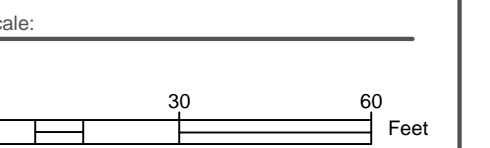


#4 LOCK AND DAM TRAIL

Revisions:

| No. | Date | Description |
|-----|------|-------------|
| | | |
| | | |
| | | |
| | | |

Approval Stamp: _____



| | |
|-------------------|-----------------------|
| Drawn By: SS | Job Number: 23-007 |
| Design By: GEN | Sheet Number: 26 |
| Date: 02-24-23 | |

Project Name: _____

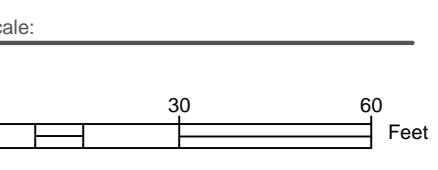


#4 LOCK AND DAM TRAIL

Revisions:

| No. | Date | Description |
|-----|------|-------------|
| | | |
| | | |
| | | |
| | | |

Approval Stamp: _____



| | |
|-------------------|-----------------------|
| Drawn By: SS | Job Number: 23-007 |
| Design By: GEN | |
| Date: 02-24-23 | Sheet Number: 27 |

Project Name: _____

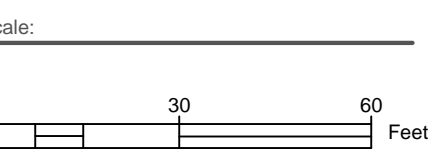


#4 LOCK AND DAM TRAIL

Revisions:

| No. | Date | Description |
|-----|------|-------------|
| | | |
| | | |
| | | |
| | | |

Approval Stamp: _____



| | |
|-------------------|-----------------------|
| Drawn By: SS | Job Number: 23-007 |
| Design By: GEN | |
| Date: 02-24-23 | Sheet Number: 28 |

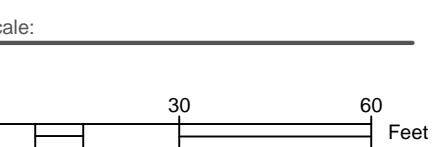
#4 LOCK AND DAM TRAIL



Revisions:

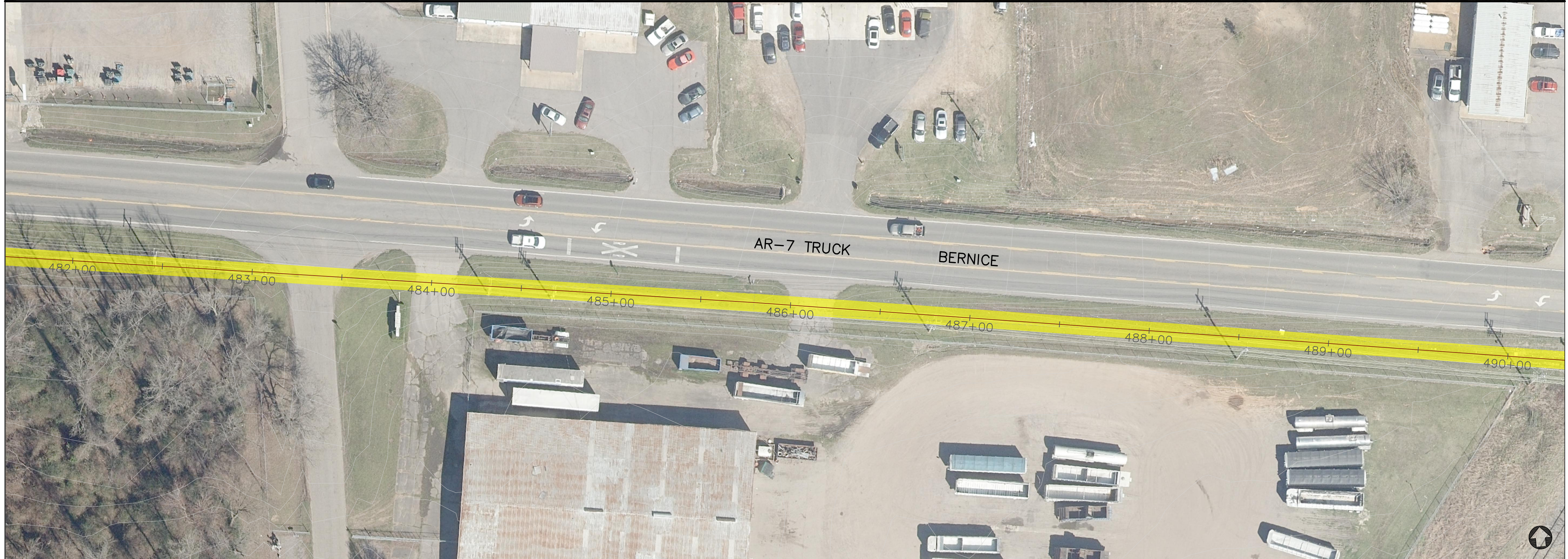
| No. | Date | Description |
|-----|------|-------------|
| | | |
| | | |
| | | |
| | | |

Approval Stamp: _____



| | |
|-------------------|-----------------------|
| Drawn By: SS | Job Number: 23-007 |
| Design By: GEN | Sheet Number: 29 |
| Date: 02-24-23 | |

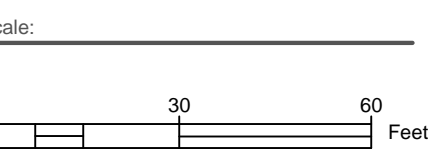
#4 LOCK AND DAM TRAIL



Revisions:

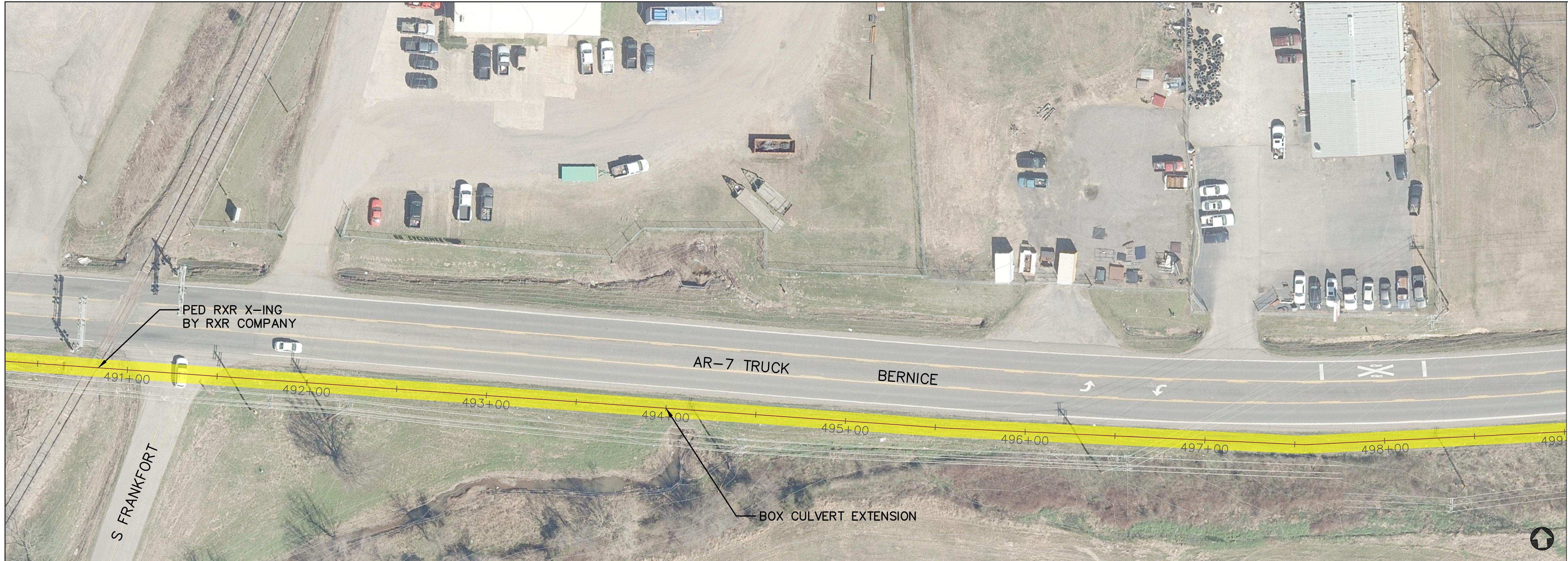
| No. | Date | Description |
|-----|------|-------------|
| | | |
| | | |
| | | |
| | | |
| | | |

Approval Stamp: _____



| | |
|-------------------|-----------------------|
| Drawn By: SS | Job Number: 23-007 |
| Design By: GEN | Sheet Number: 30 |
| Date: 02-24-23 | |

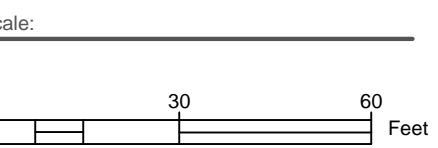
#4 LOCK AND DAM TRAIL



Revisions:

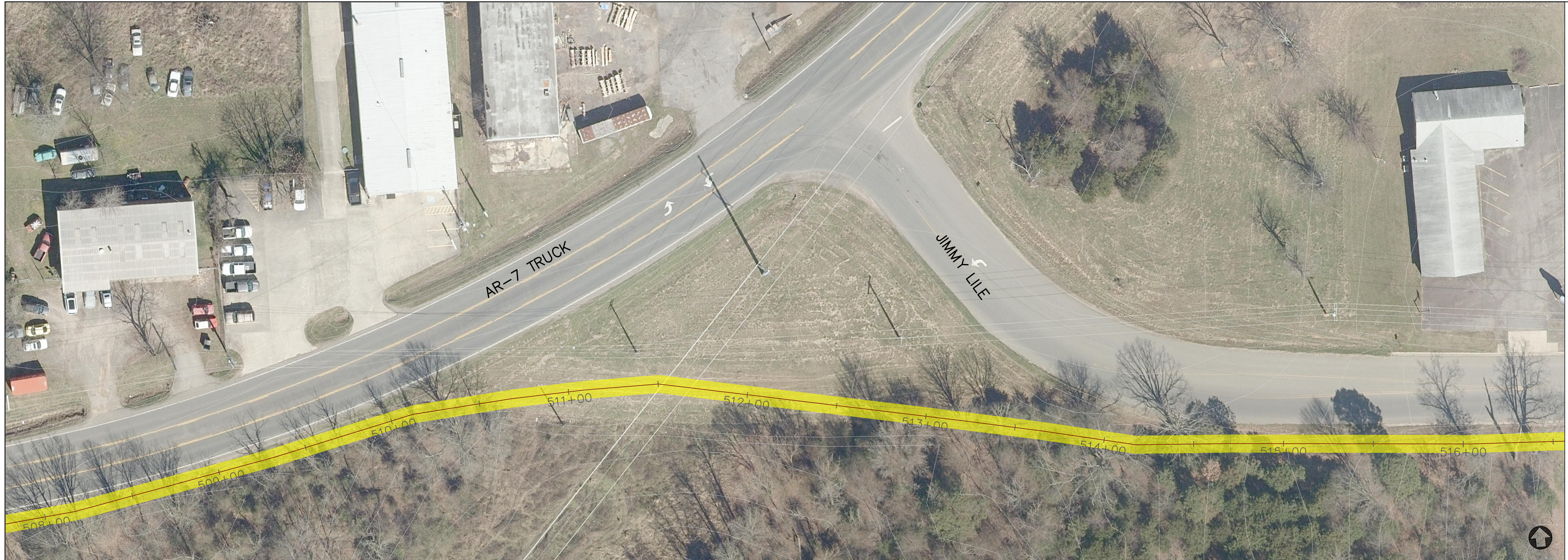
| No. | Date | Description |
|-----|------|-------------|
| | | |
| | | |
| | | |
| | | |
| | | |

Approval Stamp: _____



| | |
|-------------------|-----------------------|
| Drawn By: SS | Job Number: 23-007 |
| Design By: GEN | |
| Date: 02-24-23 | Sheet Number: 31 |

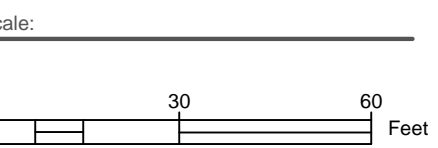
#4 LOCK AND DAM TRAIL



Revisions:

| No. | Date | Description |
|-----|------|-------------|
| | | |
| | | |
| | | |
| | | |

Approval Stamp: _____



| | |
|-------------------|-----------------------|
| Drawn By: SS | Job Number: 23-007 |
| Design By: GEN | Sheet Number: 32 |
| Date: 02-24-23 | |

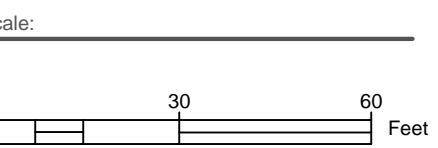


#4 LOCK AND DAM TRAIL

Revisions:

| No. | Date | Description |
|-----|------|-------------|
| | | |
| | | |
| | | |
| | | |

Approval Stamp: _____



| | |
|-------------------|-----------------------|
| Drawn By: SS | Job Number: 23-007 |
| Design By: GEN | |
| Date: 02-24-23 | Sheet Number: 33 |

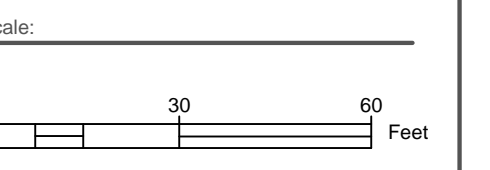


#4 LOCK AND DAM TRAIL

Revisions:

| No. | Date | Description |
|-----|------|-------------|
| | | |
| | | |
| | | |
| | | |

Approval Stamp: _____



| | |
|-------------------|-----------------------|
| Drawn By: SS | Job Number: 23-007 |
| Design By: GEN | |
| Date: 02-24-23 | Sheet Number: 34 |

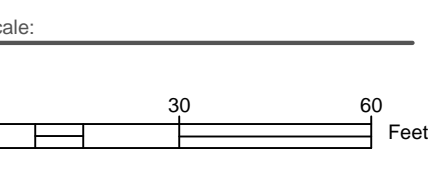


#4 LOCK AND DAM TRAIL

Revisions:

| No. | Date | Description |
|-----|------|-------------|
| | | |
| | | |
| | | |
| | | |

Approval Stamp: _____



| | |
|-------------------|-----------------------|
| Drawn By: SS | Job Number: 23-007 |
| Design By: GEN | |
| Date: 02-24-23 | Sheet Number: 35 |

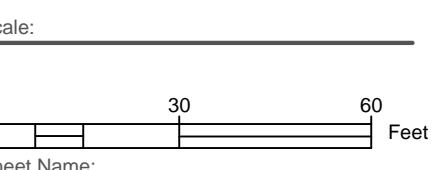
#5 AQUATIC CENTER



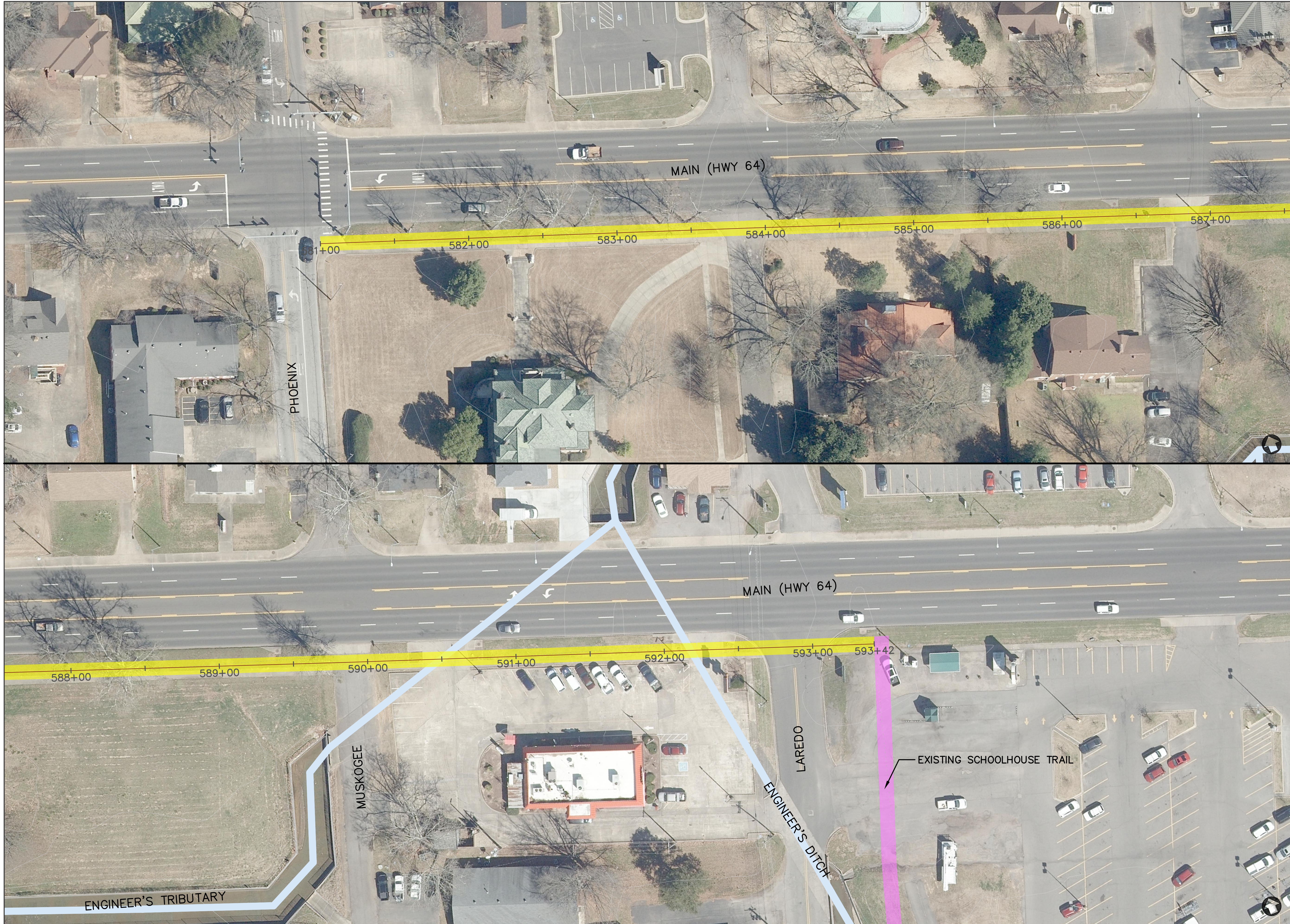
Revisions:

| No. | Date | Description |
|-----|------|-------------|
| | | |
| | | |
| | | |
| | | |
| | | |

Approval Stamp: _____



| | |
|-------------------|-----------------------|
| Drawn By: SS | Job Number: 23-007 |
| Design By: GEN | |
| Date: 02-24-23 | Sheet Number: 36 |

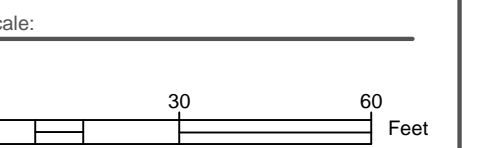


#6 WEST MAIN

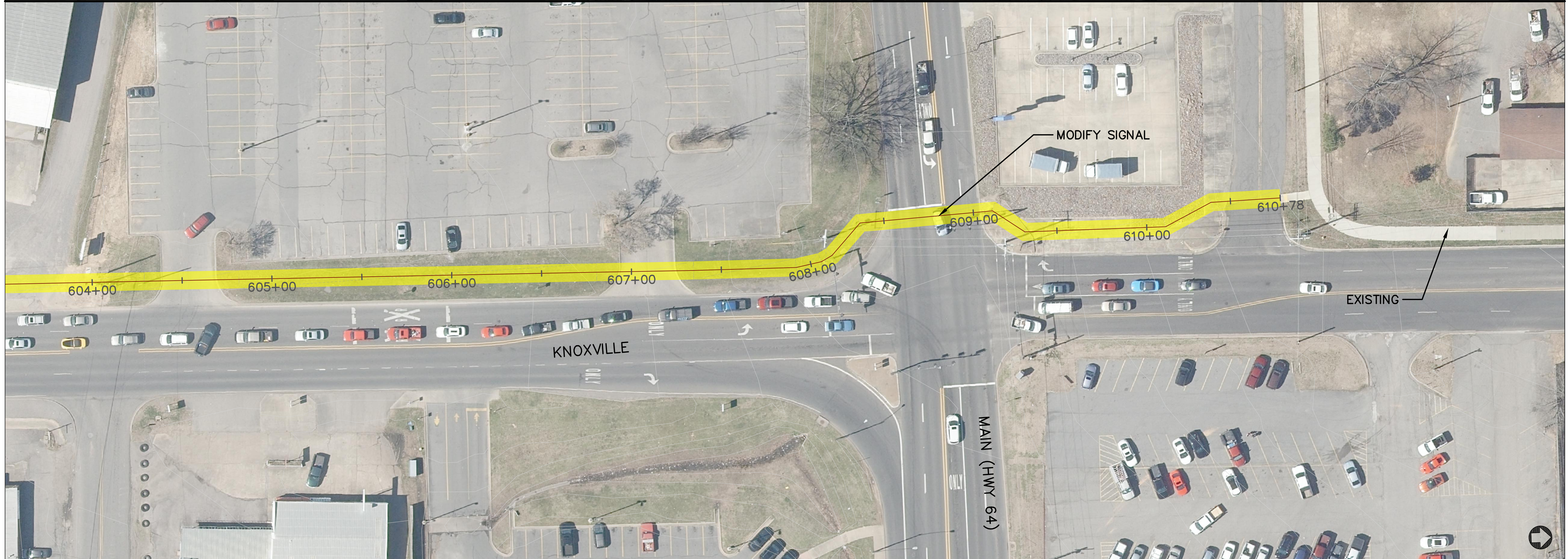
Revisions:

| No. | Date | Description |
|-----|------|-------------|
| | | |
| | | |
| | | |
| | | |

Approval Stamp: _____



| | |
|-------------------|-----------------------|
| Drawn By: SS | Job Number: 23-007 |
| Design By: GEN | Sheet Number: 37 |
| Date: 02-24-23 | |

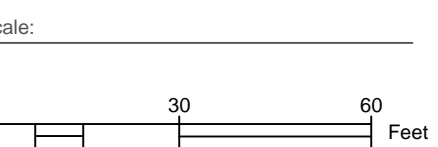


#7 NORTH KNOXVILLE

Revisions:

| No. | Date | Description |
|-----|------|-------------|
| | | |
| | | |
| | | |
| | | |

Approval Stamp: _____



| | |
|-------------------|-----------------------|
| Drawn By: SS | Job Number: 23-007 |
| Design By: GEN | |
| Date: 02-24-23 | Sheet Number: 38 |

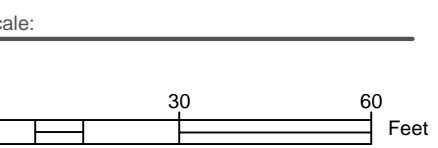


#8 Schoolhouse Connection

Revisions:

| No. | Date | Description |
|-----|------|-------------|
| | | |
| | | |
| | | |
| | | |
| | | |

Approval Stamp: _____



| | |
|-------------------|-----------------------|
| Drawn By: SS | Job Number: 23-007 |
| Design By: GEN | |
| Date: 02-24-23 | Sheet Number: 39 |

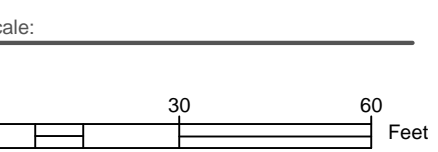
#9 S EL PASO TRAIL



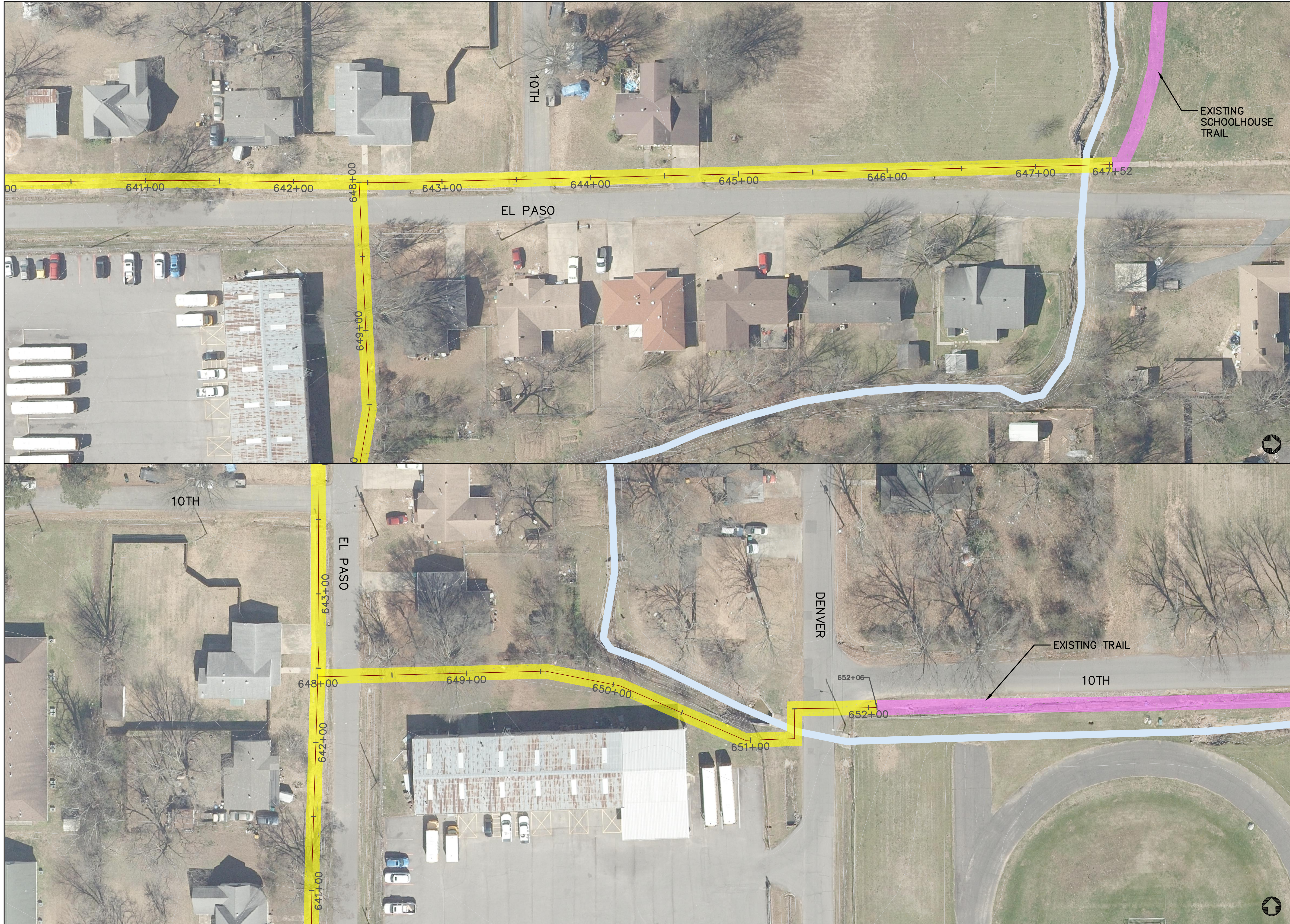
Revisions:

| No. | Date | Description |
|-----|------|-------------|
| | | |
| | | |
| | | |
| | | |

Approval Stamp: _____



| | |
|-------------------|-----------------------|
| Drawn By: SS | Job Number: 23-007 |
| Design By: GEN | Sheet Number: 40 |
| Date: 0-24-23 | |

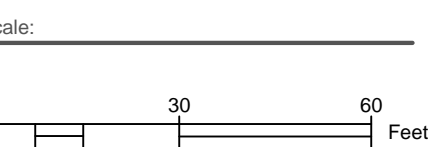


#9 S EL PASO TRAIL

Revisions:

| No. | Date | Description |
|-----|------|-------------|
| | | |
| | | |
| | | |
| | | |

Approval Stamp: _____



| | |
|-------------------|-----------------------|
| Drawn By: SS | Job Number: 23-007 |
| Design By: GEN | Sheet Number: 41 |
| Date: 02-24-23 | |

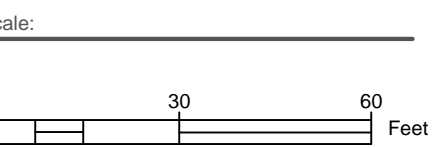


#10 D&R Rail Road Trail

Revisions:

| No. | Date | Description |
|-----|------|-------------|
| | | |
| | | |
| | | |
| | | |

Approval Stamp:



| | |
|-------------------|-----------------------|
| Drawn By: SS | Job Number: 23-007 |
| Design By: GEN | Sheet Number: 42 |
| Date: 02-24-23 | |

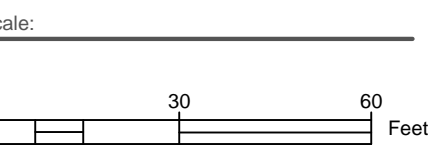
#10 D&R Rail Road Trail



Revisions:

| No. | Date | Description |
|-----|------|-------------|
| | | |
| | | |
| | | |
| | | |

Approval Stamp:



| | |
|-------------------|-----------------------|
| Drawn By: SS | Job Number: 23-007 |
| Design By: GEN | Sheet Number: 43 |
| Date: 02-24-23 | |

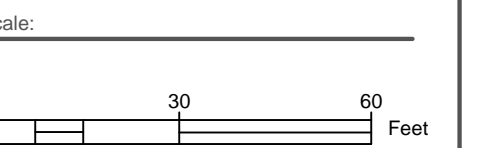


#10 D&R Rail Road Trail

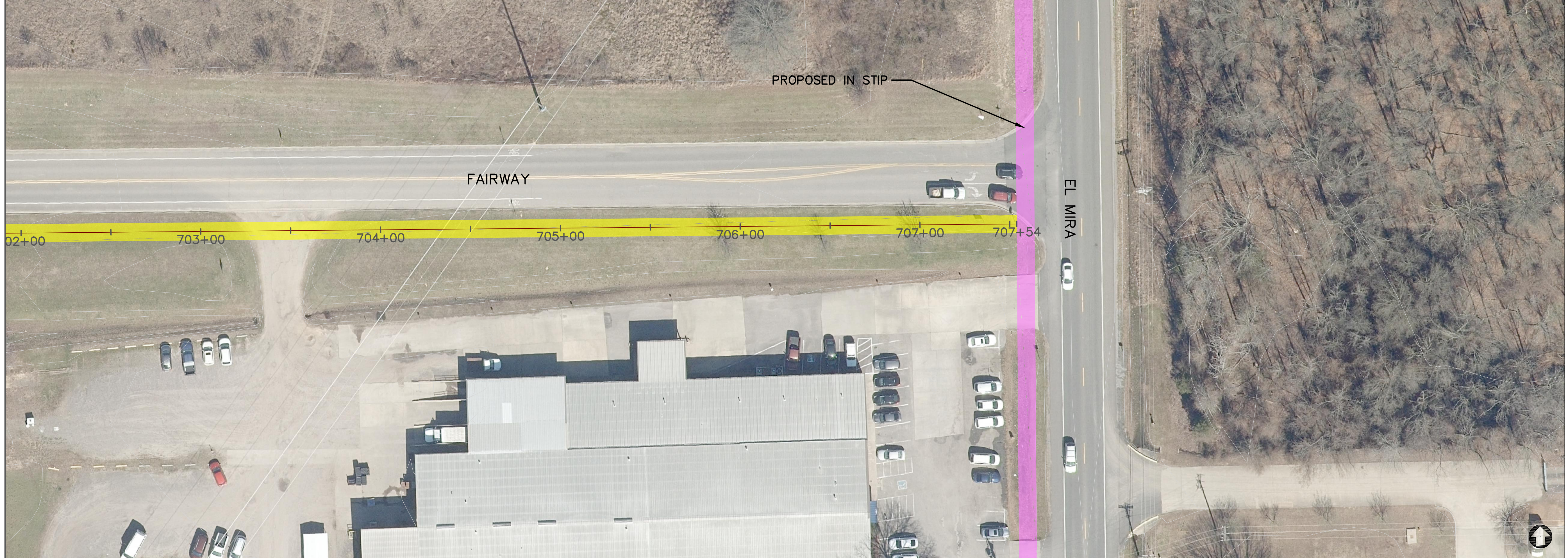
Revisions:

| No. | Date | Description |
|-----|------|-------------|
| | | |
| | | |
| | | |
| | | |

Approval Stamp: _____



| | |
|-------------------|-----------------------|
| Drawn By: SS | Job Number: 23-007 |
| Design By: GEN | |
| Date: 02-24-23 | Sheet Number: 44 |

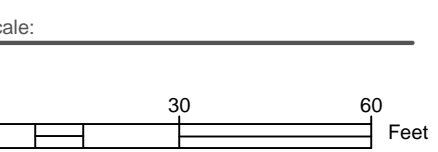


#11Elmira Connection

Revisions:

| No. | Date | Description |
|-----|------|-------------|
| | | |
| | | |
| | | |
| | | |

Approval Stamp: _____



| | |
|-------------------|-----------------------|
| Drawn By: SS | Job Number: 23-007 |
| Design By: GEN | |
| Date: 02-24-23 | Sheet Number: 45 |